



**Test Report**

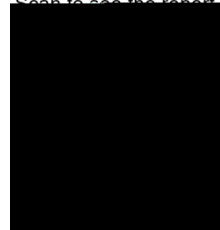
**No.:**

**Date:**

**Test Requirement**

*See page 10*

Scan to see the report





**Test Report**

**No.:**

**Date:**

**Test Result(s):**

--	--	--	--

**EU RoHS Directive (EU) 2015/863 amending Annex II to Directive 2011/65/EU - Lead, Mercury, Cadmium, Hexavalent chromium, Polybrominated biphenyls (PBB), Polybrominated diphenyl ethers (PBDE), Bis(2-ethylhexyl) phthalate (DEHP), Butyl benzyl phthalate (BBP), Dibutyl phthalate (DBP) and Diisobutyl phthalate (DIBP)**

**Test Method:**

--	--



# Test Report

No.:

Date:



Notes:

## Element(s)

Test Method:



## Halogen

Test Method:



**Test Report**

**No.:**

**Date:**

--	--	--	--	--





**Test Report**

**No.:**

**Date:**

**PFOSA, its salts**

**PFOA, its salts & derivatives**



**Test Report**

No.:

Date:

**ATTACHMENTS**

**Elements Testing Flow Chart**





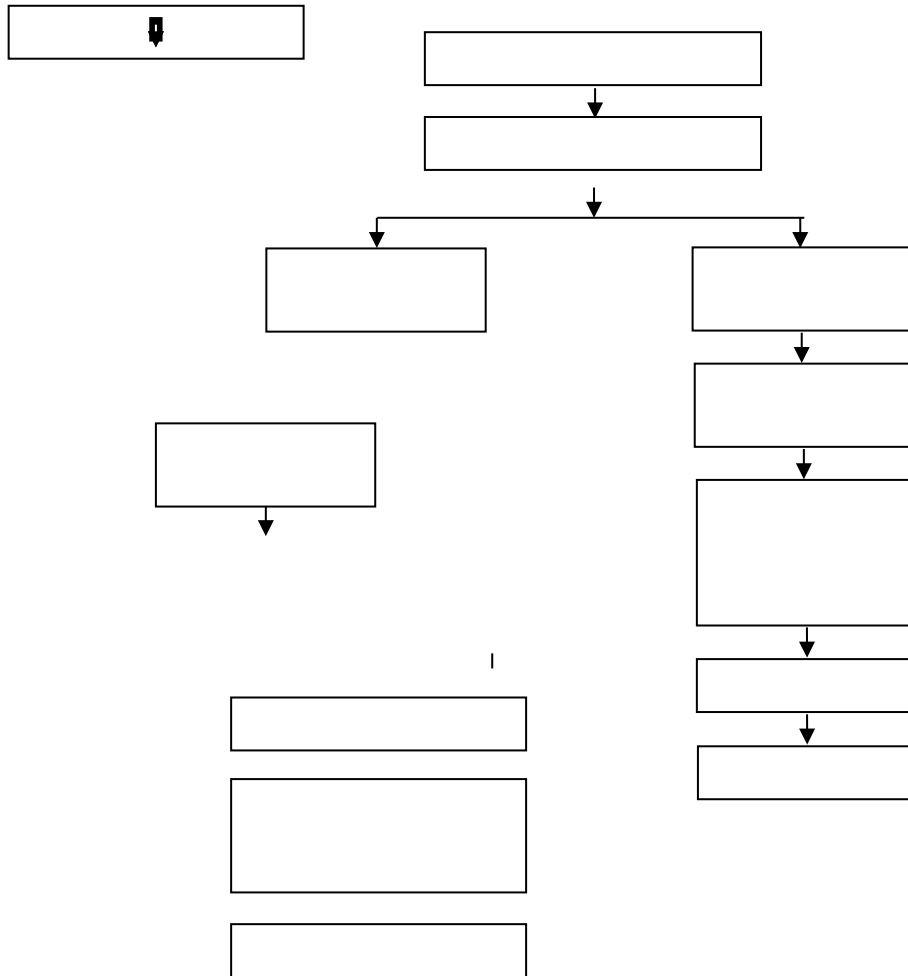
**Test Report**

No.:

Date:

**ATTACHMENTS**

**Hexavalent Chromium (Cr(VI)) Testing Flow Chart**





**Test Report**

**No.:**

**Date:**

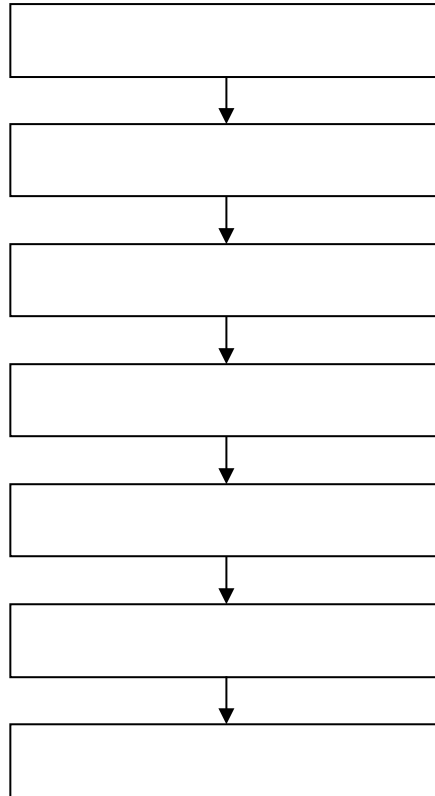


**Test Report**  
**ATTACHMENTS**

No.:

Date:

**Elements Testing Flow Chart**



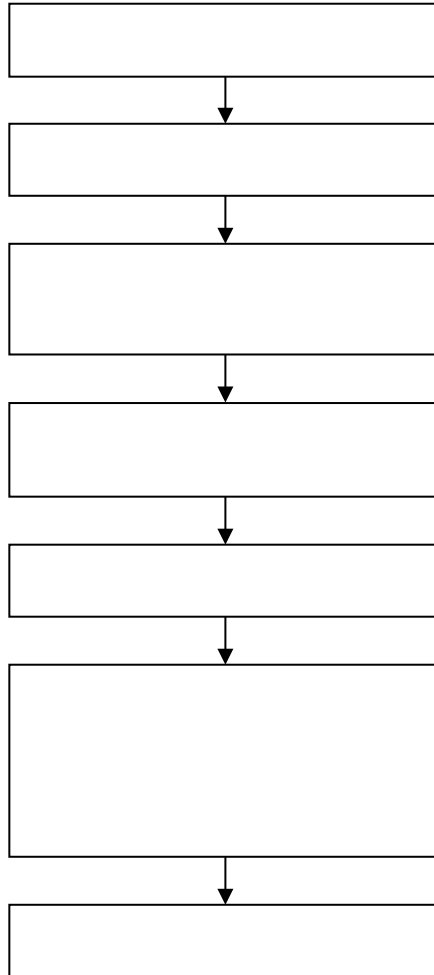


**Test Report**  
**ATTACHMENTS**

No.:

Date:

**Halogen Testing Flow Chart**



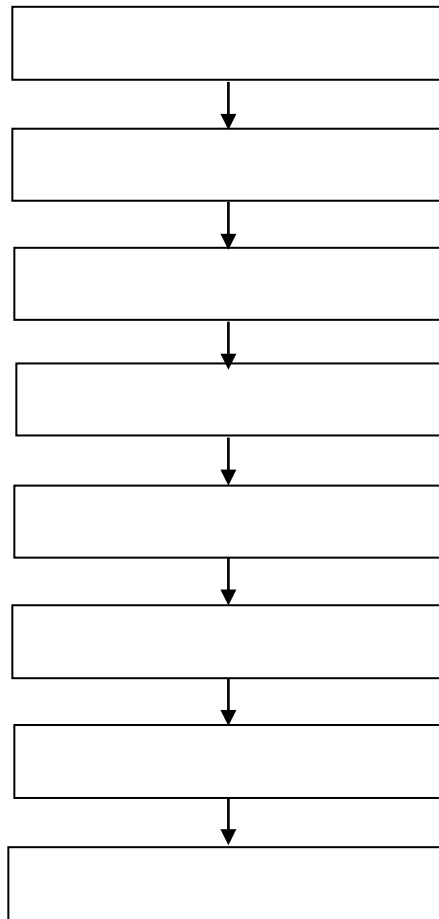


**Test Report**  
**ATTACHMENTS**

No.:

Date:

**Chlorinated Paraffin Testing Flow Chart**





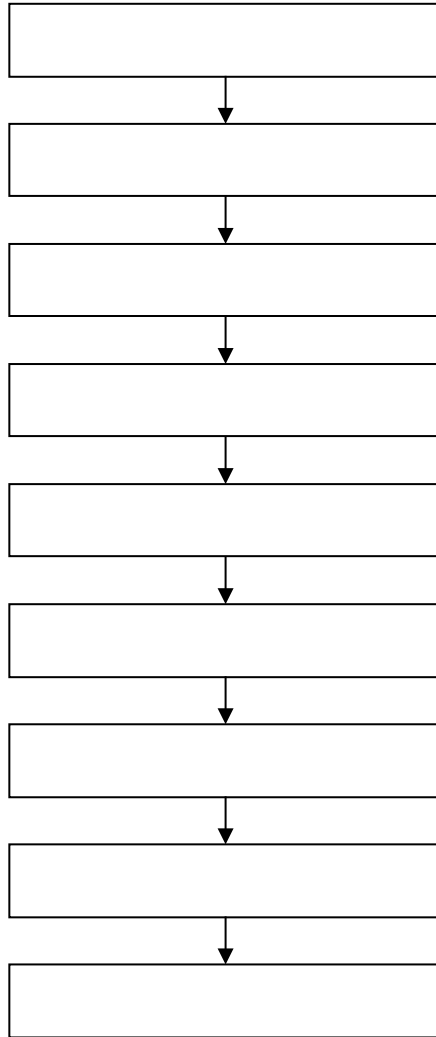
**Test Report**

No.:

Date:

**ATTACHMENTS**

**TBBP-A Testing Flow Chart**



**Test Report**

**No.:**



**Test Report  
ATTACHMENTS**

No.:

Date:

**PFASs/ PFOS/PFOA Testing Flow Chart**

